

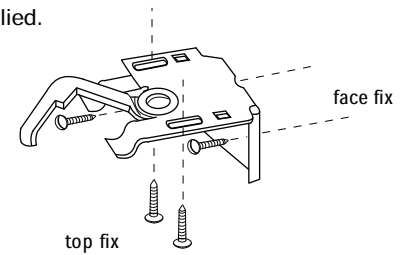
CHAIN OPERATED ROMAN BLIND FITTING INSTRUCTIONS

Your made to measure Roman blind is supplied complete and ready to hang on the brackets supplied. Please read the following instructions carefully before fitting your blind.

1. Fixings

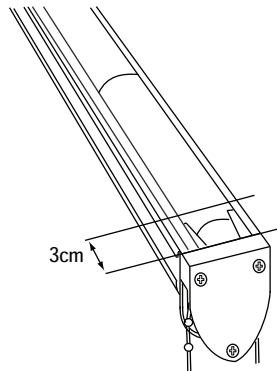
The brackets are designed to be used as either top fix (top of the window recess or ceiling) or face fix (wall or window frame).

In order to provide the stability for fixing or removing the rail it is essential that the brackets are fixed securely.



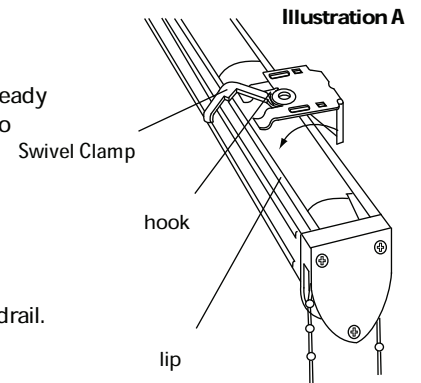
2. Attaching brackets

Please note when attaching brackets to their fixings allow a minimum of 3cm from the ends of the headrail to avoid obstructing end mechanism. For larger blinds extra brackets will be supplied - these are to be attached in a central position.



To attach blind to brackets already fitted simply raise headrail into position as in illustration A.

When fixing the headrail ensure that the two hooks on the brackets are hooked underneath the lip in the headrail.



3. Securing headrail to bracket

Hold headrail in place push the swivel clamp to the left which will hold the headrail securely in place.

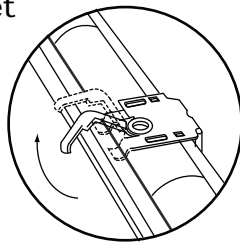
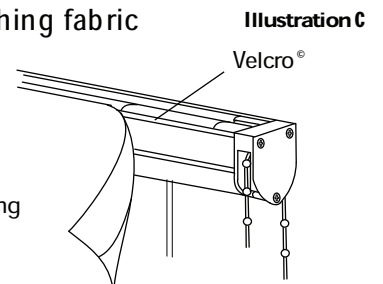


Illustration B

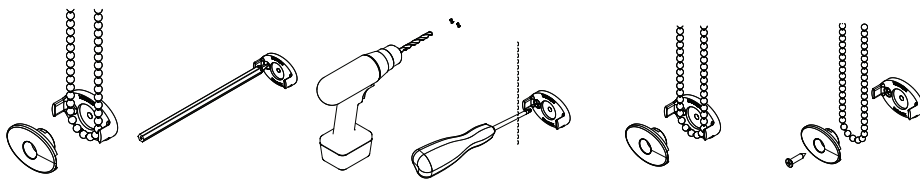
4. Attaching and detaching fabric

The fabric on our chain operated Roman blind system can be detached from the headrail for cleaning see illustration C.



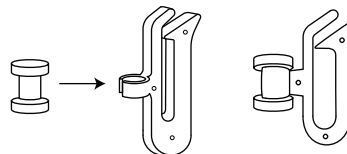
5. Installing the tension device

This tension device reduces the hazards of strangulation and entanglement of young children by limiting access to the control chain. Fit the tension device as per the diagrams below. Please ensure you fit this Tension Device at the maximum vertical distance from the control mechanism to prevent the chain from becoming slack.



5. Cord breakaway device

The lift cords to the rear of this blind are all fitted Breakaway cord guides these are designed to ensure the cord detaches from the blind when force is applied to the cord. This can be easily reconnected by simply clipping the small plastic cylinder back into the main cord guide as illustrated.



6. Cleaning instructions

If cleaning is necessary we recommend that you dry clean your Roman blind, especially when lined as washing may cause differential shrinkage between the fabric and the lining.

7. Use of control chain to operate the blind

Pulling gently on the chain in one direction raises the blind, pulling it in the other direction lowers it.

! WARNING

Young children can be strangled by loops in pull cords, chains, tapes and inner cords that operate the product. To avoid strangulation and entanglement, keep cords out of the reach of young children. Cords may become wrapped around a child's neck. Move beds, cots and furniture away from window covering cords. Do not tie cords together. Make sure cords do not twist and create a loop.